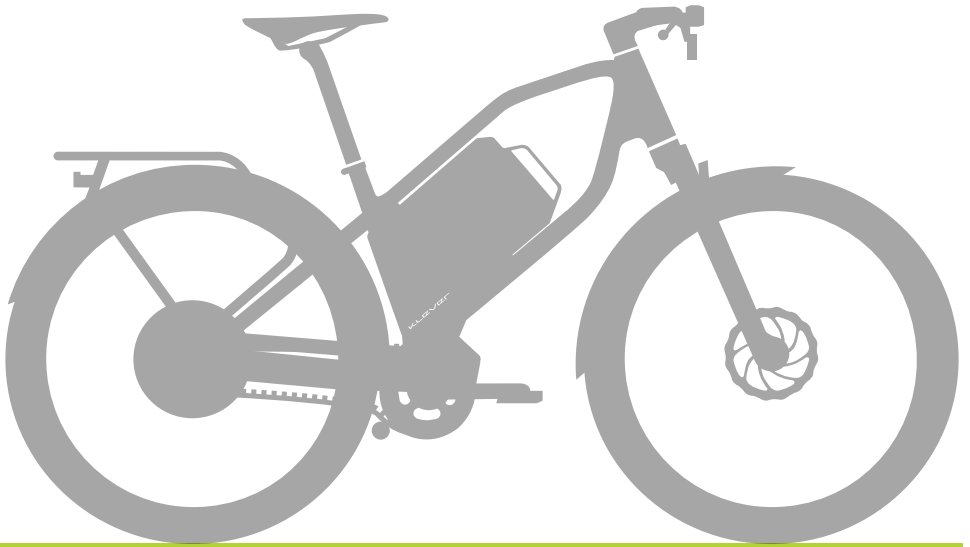


Model

X Pinion 25



MY'2023

This technical documentation has been compiled by: Klever Mobility NL bv.

Contents

Introduction

1. QuickStart	6
2. What type of E-bike?.....	9
3. Getting started & safety check	11
4. Behaviour in road traffic with a 25 km/h E-bike.....	12

Klever's E-bike drive train

5. Klever's proprietary propulsion – the BIACRON-system	14
5.1 Sensors & their function	16
5.2 Levels of electric motor support	17
5.3 Regeneration of battery capacity	18
5.4 Display	19
5.4.1. Function of each button	20
5.4.2. Display content.....	23
5.4.3. Settings of the menu & the submenu's.....	26
5.5 Rechargeable battery.....	31
5.5.1 Charging the battery	33
5.5.2 Battery range.....	35
5.5.3 Removal & mounting of the battery	38
5.5.4 Transport of the battery	39
5.6 Elementary diagnostics & troubleshooting of the electric system.....	39

Bicycle parts of your E-bike

6. Bicycle parts	40
6.1 Saddle & handlebar adjustment	40
6.2 Suspension front fork	42
6.3 Disc brakes	43
6.4 Belt drive & 9 speed gearbox	44
6.4.1. Belt	45
6.4.2 9 Speed gearbox.....	45
6.5 Lighting.....	47
6.6 Wheels & tyres	47
6.7 Luggage carrier & transport of luggage	50
6.8 Anti-theft protection.....	50
6.9 Accessories.....	50
6.10 Child seat	51
6.11 Bicycle trailer	52

E-bike care

7. Wear, maintenance & inspections	54
8. Storage & transport of your Klever E-bike	56
9. FAQ's	58

Legal & environment

10. Klever X Pinion 25 & EC Declaration of Conformity	60
11. Intended use of your Klever 25 km/h E-bike.....	62
12. Product liability & warranty	64
13. Disposal & transportation	66

Data

14. Technical data Klever X Pinion 25	68
15. Klever E-bike passport	72
16. Klever inspection plan	73
17. Imprint.....	74

1. QuickStart

Dear customer,

On the first pages you will find instructions for a QuickStart with your new Klever 25 km/h E-bike. For more technical information read the additional instructions on the following pages. Should you have any further questions, please ask your local Klever dealer or contact our technical hotline. The hotline's contact details are to be found in chapter 2. and at the end of this manual.

Enjoy your Klever 25 km/h E-bike, we wish you a lot of fun,
The Klever Mobility team.



Image 1.1

Safety check

Before starting your E-bike always check the operation of the brakes and the tyre pressure.

Launch of the electric drive

You can start the system with or without inserting the dedicated E-KEY (image 1.2). Check for the function of the E-KEY section 5.4.3. Menu & submenus for settings. As soon as you insert the E-KEY into the display, the system will be activated and will start itself. With the E-KEY already in the display while the system is off, there are two ways to activate the system:

- 1. Press the on/off button** (image 1.3), after a 3 seconds system check your E-bike is ready to be pedalled.
- 2. Or just start pedalling and the electric system will wake up automatically.** After a 3 seconds system check, the electric drive will start to support.



Image 1.2



Image 1.3

N		No support, electric system active
ECO		Low support
TOUR		Medium support
MAX		Strongest support

The ⚡ (TURBO) button on the display has **2 functions**:

1. Walk-assist: actuate the ⚡ (TURBO) button while walking next to your E-bike. The maximum speed is 4 km/h.	≤ 4 km/h	Pushing aid while taking your E-bike by the hand.
2. TURBO-mode WITH pedalling of the cyclist. While actuating the ⚡ (TURBO) button in ECO- or TOUR-mode the electric support will be increased to MAX-mode. The maximum speed is 25 km/h.	≤ 25 km/h	Additional support while riding hills or strong headwinds.

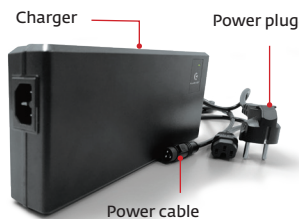


Image 1.4



Image 1.5

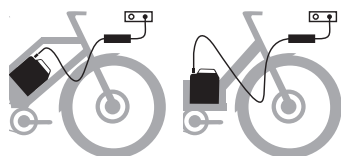


Image 1.6



Image 1.7

Charging the rechargeable battery

Caution! The battery should only be charged with the dedicated Klever charger (image 1.4).

The battery can be charged on (image 1.6) and off bike (image 1.7). For removal of the battery from its docking station see section 5.5.3.

- Connect the Klever charger with the power plug to the wall socket.
- If the LED on the charger shows constant red light, the charger is ready for use.
- Connect the charger plug of the charger to the charging socket on the battery (images 1.4 + 1.5). The charging process starts automatically.
- Once the LED on the charger constantly lights green the operation is completed and the battery is charged.
- Unplug the power plug from the wall first, then remove the charger lead from the battery charger.

State of charge	Charger LED	Battery LED	Note
	Flashing red		Error code: check connections
	Steady red		Charger ready to charge
0%	Flashing yellow	Flashing red	Capacity very low; charging starts
< 35%	Steady yellow	Flashing red	Normal charging
35 – 75%	Steady yellow	Flashing yellow	Normal charging
75 – 90%	Steady yellow	Flashing green	Normal charging
> 90%	Flashing green	Flashing green	Final charging
100 %	Steady green	No LED colour	Fully charged

The charging of an empty rechargeable battery (from 0% to 96%):

- Of 570 Wh will take about 7 hours with a 2A charger.
- Of 850 Wh will take about 3.5 hours with a 6A charger.

2. Introduction & which type of E-bike?

Congratulations! With the purchase of this Klever 25 km/h E-bike you are the owner of a high-quality E-bike. For a trouble free, pleasurable riding experience, carefully read this manual. You will find everything you need to know in terms of specifications, operation, maintenance and care. For additional information look in the separate manuals which come with some of the components.

Pay particular attention to sections in bold which are marked with the "Caution!" symbol. The most important information is summarised. It should be observed to avoid possible accidents and danger to life and limb.

Bold sections marked with the "Please note!" symbol contain information about your E-bike, its accessories and its handling.

Operations marked with the "Tool" symbol are to be executed by authorised Klever dealers. These operations require specific expertise and dedicated tools.

Furthermore, in case you need any additional information or advice, please contact.

Klever Benelux bv technical hotline at +31 (0)302102905 (Monday - Friday from 8h00 – 17h00 CET)

Or contact an authorised Klever retailer. The latest available information on our products, other technical information and videos can be found on our website: www.klever-mobility.com.

E-bikes & speed E-bikes

Over the last 15 years the E-bike category has become enormously popular. Today you will find all sorts of E-bikes. The current market of E-bikes with pedal assistance consists of two main types of E-bikes with their own legal framework:

- Regular E-bikes with a maximum pedal assisted speed up to 25 km/h, called EPAC's (Electrically Pedal Assisted Cycles).
- And Type-approved E-bikes with a maximum pedal assisted speed up to 45 km/h, called speed pedelecs or speed E-bikes.

Klever Mobility offers E-bikes in both categories, 25 km/h EPAC's as well as 45 km/h speed E-bikes.

25 km/h. E-bikes, EPAC's

Your new Klever 25 km/h E-bike has been equipped according to the Belgian & Dutch Road Traffic Act. Hence, you can use it safely on public roads. This E-bike has been equipped with a bright-sounding horn, a complete lighting system with quality marks for the headlight and the tail light, reflectors and with 2 sets of brakes independently actuating the front and rear wheel.

The additional electric motor support is limited to max. 25 km/h, and thus complies with the statutory requirements for EPAC vehicles (Electrically Pedal Assist Cycles). Therefore, this 25 km/h E-bike falls under the class of regular bicycles. Meaning you do not need a liability insurance, nor a license plate or a driving license. Moreover, it is not mandatory to wear a helmet, even though we strongly recommend to wear one for your own safety.

In the legal section (chapters 10. & 11.), you will find more information on the EC Declaration of Conformity and the legal aspects and usage of a 25 km/h E-bike.

3. Getting started & safety check of your Klever 25 km/h E-bike.

Your E-bike has been subjected to an end-of-line-check on the assembly line of our factory. Afterwards it has been checked at your local Klever dealer. Yet, the transport and the use over time may have caused some changes. Therefore, prior to your first ride, and occasionally thereafter, you should consider to check following points.

- Make yourself familiar with this 25 km/h E-bike and the functioning of its electric motor support, before the first ride in public traffic.
- Setting of the saddle and the handlebars.
- Function of the brakes.
- Air pressure and the profile depth of the tyres.
- Proper operation of the lighting system.
- Tightness of the bolts and nuts of the wheels.
- Minimum insertion of the seat post.



Caution! Do not start when you identify deficiencies in one of these points. While riding a defective E-bike this can cause accidents and endanger your life. If in doubt, contact your dealer or our technical hotline.



Caution! Through extreme weather and road conditions there is wear and tear in everyday riding. Because of the dynamic loads the parts & components of your E-bike experience different material fatigue and wear. Therefore, it is recommended to inspect your E-bike on a regular basis and look for wear of parts and changes in scratches or cracks, or the discolouring of parts. These could indicate damage of the part. Needless to say, that damaged parts must be repaired or replaced.



Please note! Following the inspection plan in chapter 16., you best bring your E-bike to your Klever dealer for inspection, service, maintenance and repair.



Please note! Make sure to only use original Klever spare parts for replacement. In case you are not sure whether to use certain spare parts, always contact your official Klever dealer or otherwise call our technical hotline.

4. Behaviour in road traffic with a 25 km/h E-bike

With the help of the electric pedal assistance, you reach high speeds and you accelerate substantially faster and easier than you are used to with a regular bicycle. Therefore, you should intensively familiarise yourself with this 25 km/h E-bike on a traffic-calmed road or parking lot before going in public traffic. During riding on the road, you should follow these guidelines:

- It is not mandatory to wear a bicycle helmet. Yet, we strongly recommend to wear one for your own safety.
- Make yourself familiar with the traffic rules and stick to the rules.
- Be ready to brake at any time and expect misconduct of others.
- Ride defensively and be considerate to other road users.
- Ride as much as possible on bike lanes.
- Always keep your E-bike in a perfect condition.
- Use your E-bike only in accordance with its intended purpose (see chapter 11. Intended use).
- Do not use a mobile phone nor a headset while riding.
- Be sure to observe the maximum weight of cyclist + E-bike + luggage (see chapter 14. Technical Data).
- Have your E-bike checked according to the recommended service intervals (see chapter 16. Inspection plan) by authorised Klever dealers.

5. Klever's proprietary electric propulsion – the BIACTRON system

You have purchased a 25 km/h E-bike that helps improve your day-to-day mobility with its electric propulsion. Slopes can be better managed and wind resistance can be better overcome.

Klever's electric BIACTRON system consists of the following components (image 5.1):

1. Rechargeable battery
2. Motor
3. Control unit / Display
4. Motor controller
5. Torque sensor
6. Pedal Sensor
7. Charger (image 5.2)
8. Headlight
9. Tail light

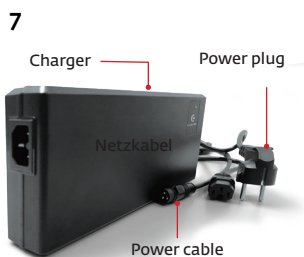
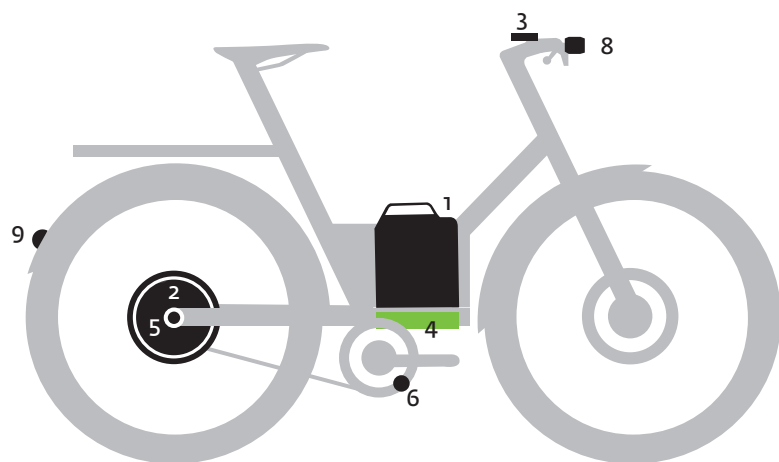
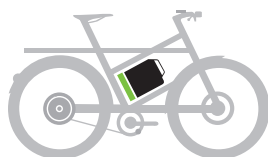


Image 5.2



different positions:



Motor controller (4) and rechargeable battery (1) can be in different positions. Depending on the bike model.

Image 5.1

Powerful system benefits

The brushless Klever BIACTRON rear wheel motor comes with 3 powerful advantages:

1. Contrary to centre motor drive trains, with a motor around the bottom bracket, the direct drive rear wheel motor is whisper-quiet.
2. The motor in the rear wheel is at the end of the drive train. For this reason, the electric motor support has no negative impact on the shifting performance and the wear of the drive train. By contrast, in E-bikes with a centre motor, the joined forces and torque of both cyclist + motor go through all components of the drive train. Consequently, shifting gears goes less smoothly and the wear of drive train components such as chain, chainwheel, sprockets and derailleurs goes twice as rapidly.
3. Last but not least, with the rear wheel motor the drive train has no efficiency loss. Motor power and motor torque go instantly from the tyre to the road surface without any drive train losses.

Once you turn on the system and you start pedalling, the motor will support you as long as you continue to pedal, up to a maximum speed of 25 km/h.

The five levels of motor support of the BIACTRON system can be selected according to the external circumstances (e.g., climbing uphill or riding with headwind) or to your personal preferences. Please note that a higher level of motor support consequently means a higher battery consumption. And reduces the range of the system and battery.

In case you ride faster than 35 km/h (e.g., downhill), automatically the recuperation of pedal energy (i.e., technical regeneration) will be activated. In that case the motor operates as a generator and partly re-charges the battery. The recuperation of pedal energy and battery capacity = REGENERATION will be explained in section 5.3. Recuperation of battery capacity.

5.1. Sensors & their function

This Klever 25 km/h E-bike is equipped with a torque sensor in the frame's rear dropout. In conjunction with the pedal sensor, this torque sensor precisely monitors the cycling effort of the cyclist. The motor controller then calculates the sensor values and manages precisely the amount of electric support from the motor. Hence generating a perfect synergy between cyclist and E-bike.

In addition, you can define the amount of motor support by yourself as well, choosing between ascending levels of support (N, ECO, TOUR, MAX, TURBO). This makes the system very efficient and economic, saving power consumption and maximising range.

The additional speed sensor sets the power of the electric motor to zero once you have reached a speed of 25 km/h or more. Above 25 km/h this E-bike functions like a conventional bicycle, the only way to maintain the propulsion of the vehicle is by pedalling solely.

The electric motor support only kicks in under the condition that you actively pedal. Therefore, to get started from standstill you have to pedal. Alternatively, while you start pedalling, you can actuate the ⚡ (TURBO) button on the display in order to get the highest support. Convenient when starting uphill. The ⚡ (TURBO) button can also be used in case the E-bike has to be pushed while walking alongside your bike.

5.2 Levels of electric motor support

The BIACTRON-system offers five levels of electric motor support:

- N
- ECO
- TOUR
- MAX
- TURBO

Depending on topography, weather conditions and your personal preferences, you can choose the motor support using ↑ (Up arrow) and ↓ (Down arrow) button and the ⚡ (TURBO) button.

System level	Amount of support	Situation (recommended)
N	No support, electric system active	Downhill
ECO	Low support	Flat roads
TOUR	Medium support	Slight hills / headwind
MAX	Strongest support	Steep hills / fierce headwinds
⚡ (TURBO) (MAX) while pedalling ≤ 25 km/h.	Strongest support	Steep ramps / violent gusts
⚡ (TURBO) (ECO) walking with your E-bike ≤ 4 km/h.	Walk-assist, low support	Walking with your E-bike or pushing it uphill

i **Please note! In case you actuate the ⚡ (TURBO) button, there are two scenarios:**

1. **You walk alongside the E-bike and/or you push it out of your garage. While pushing the ⚡ (TURBO) button you will activate the Walk-assist mode and you will trigger a moderate electric motor support up to 4 km/h. In this way you can walk with your vehicle comfortably and easily.**
2. **You are sitting on your E-bike. You are pedalling with for instance TOUR support and you need the strongest support momentarily. Push the ⚡ (TURBO) button while pedalling and you will trigger the strongest support regardless your speed (from 0 to 25 km/h).**

Please note! These 2 options will only function while you keep the ⚡ (TURBO) button pushed. As soon as you release the ⚡ (TURBO) button, the electric motor support will stop. Except in the latter case of pedalling: in that case after releasing the ⚡ (TURBO) button the level of electric motor support will go back to the preselected level (TOUR as in the example of scenario 2).

In order to save battery power, the support level will automatically be limited to the TOUR level when the battery capacity drops to 10%. When the battery capacity drops to 5% the support level will be limited to the ECO level and in the case of a battery capacity of 2% or less the level will be N. No pedal assistance, but the electric system remains active for lighting, display, motor locking and alarm.

5.3 Recuperation of battery capacity: regeneration

The Klever BIACTRON system has a unique feature: the recovery of battery capacity, also known as regeneration. Every time the drive system goes into freewheel, coasting mode, the BIACTRON system will start braking the motor. The motor friction is being converted into electricity that is being restored into the battery. The freewheel mode starts once you do not pedal and roll out to a traffic light or you coast down a hill or mountain without having to pedal.

In addition, this Klever 25 km/h. E-bike has also a second way to recover battery capacity. Both brake levers have a built-in brake sensor. When actuating the brake levers, the regeneration function will be activated while the motor support will be immediately switched off and the disc brake callipers start to brake the wheels.

Section 5.4.3 (Menu for settings) explains how this function can be activated and adjusted to your personal preferences. The regeneration function is a nice addition to the consumption and range of your battery. The more and longer you ride in a mountainous environment, the more you will benefit from this function. However, the recovery of electricity is limited and depends to a large extent on your riding behaviour, the environment and the chosen regeneration settings.

5.4 Display

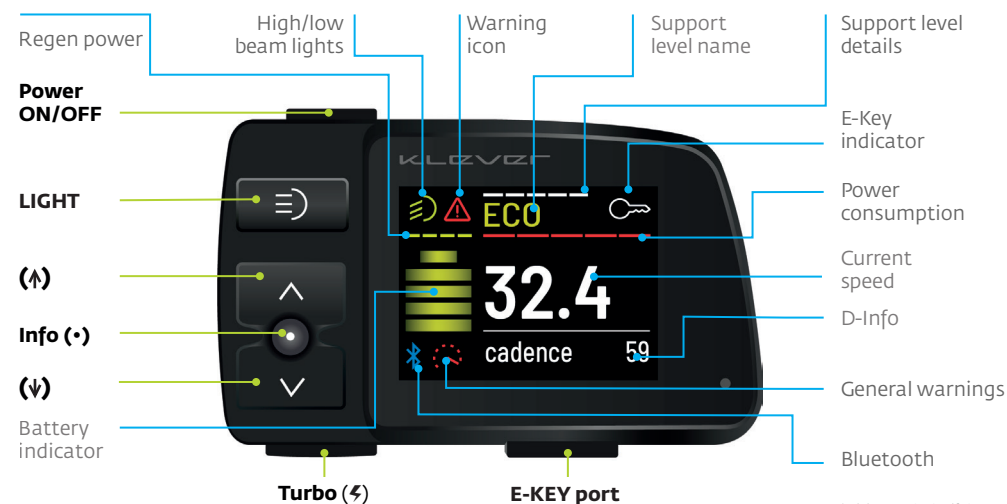


Image 5.3

With the display you start and control the BIACTRON-system. Upon purchase your Klever dealer will pair the E-bike with a set of two E-KEYS with a unique ID code. After the pairing your E-bike will only function and start with these E-KEYS with the dedicated and programmed ID code. It is impossible to activate your E-bike with other E-KEYS from other bikes.

Now you can start the system WITH or WITHOUT inserting the E-KEY (see section 5.4.3).

Every press of a display button will be confirmed with a short acoustic signal. As soon as you insert the E-KEY into the display (image 5.4), the system will start. With the E-KEY already in the display while the system is off, there are two ways to activate the system:

- 1. Press the On/Off button** (image 5.3), after a 3 seconds system check your E-bike is ready to be pedalled.
- 2. Just start pedalling, the electric system will wake up automatically.** After a 3 seconds system check, the electric drive will start to support.



Image 5.4

*Visit your dealer if the warning signal continues to appear on the display

Button	Location	Function
Power	Upper left edge	On/Off system
INFO (•)	Middle left	Switch between time, trip, Km-day, odo, soc (state of charge), kcal (calories) and cadence
Up arrow (↑)	Middle left	Increase support level
Down arrow (↓)	Lower left	Reduce support level
⚡ Turbo	Lower left edge	Walking aid (while walking next to the E-bike) Strongest support (while pedalling)
Light	Upper left	On/Off light

5.4.1. Function of each button



Image 5.5

On/Off button (image 5.5)

Press the POWER button and you'll boot the system. The system performs a system check of 3 seconds, and the drive system is ready to operate. The electric drive will start to support depending on the level of assistance chosen. Press this button again, the system will be turned off and all settings are being stored. Press the button again, the system starts and all previous settings and levels of support are enabled again.



Image 5.6

Up arrow (↑) button (image 5.6)

Press the up arrow (↑) button and you increase the support level. For instance, when the selected level is TOUR and you press the up arrow (↑) button, the support level of the motor will increase to MAX level.



Image 5.7

Down arrow (↓) button (image 5.7)

Press the down arrow (↓) button and you decrease the support level. For instance, when the selected level is TOUR and you press the down arrow (↓) button, the support level of the motor will decrease to ECO level.

INFO (•) button (image 5.8)

Press the INFO (•) button and you enter into a loop subsequently offering all rider's data on the screen. Press the INFO (•) button shortly in order to go through the available rider's data: **time, trip, Km-day, odo, soc, kcal** and **cadence**. See below. Please note: the available rider's data may vary depending on Klever model and software version.



Image 5.8

Press "INFO button" to change the D-INFO



Image 5.9

Time (hh:mm) (image 5.10)

The time can be adjusted in the settings menu of the display, synchronising with your smartphone or with the service tool at your Klever dealer.



Image 5.10



Image 5.11

Trip (image 5.11)

The number of kilometres ridden since the last reset, in this case 0.9 km. In case you want to reset the trip distance to zero at the start of a new trip, press the INFO (•) button long and select 'Reset' in the menu. Select 'yes' and confirm by pressing the INFO (•) button (see section 5.4.3 with the submenus of the display settings).



Image 5.12

Km-day (image 5.12)

Kilometres ridden today, starting at 00:00 AM, in this case 3.5 km. The daily mileage will be set to zero at midnight 00:00 every day.



Image 5.13

odo (image 5.13)

Accumulated kilometres during the entire lifecycle of your Klever E-bike, in this case 459 km. When the odo reaches 99,999 km. it will be reset to 0.



Image 5.14

SOC = State of Charge (image 5.14)

The SOC indicates the current battery capacity, in this case 49% of the total.



Image 5.15

Kcal (image 5.15)

The rider's number of kilocalories burnt while cycling, in this case 12.0 kcal. For proper kcal calculation please set the rider's weight as well. Press the INFO (•) button long and select 'Rider' in order to input the rider's weight. Kcal can be reset by selecting RESET kcal in the EXTRA-menu (see section 5.4.3 with the submenus of the display settings).

Cadence (image 5.16)

The cadence is the rider's pedal frequency shown in rotations per minute (RPM). In other words, it shows how many full rounds your pedals make per minute. In this case 59.



Image 5.16

⚡ (TURBO) button (image 5.17)

This button has two functions for two different scenarios of ⚡ (TURBO) usage:

1. As a walk-assist while walking alongside your E-bike.
2. As a ⚡ (TURBO) power assist while pedalling.

Section 5.2 deals in detail with these two different ⚡ (TURBO) power scenarios.

Please note! We recommend that you familiarise yourself with the 2 different scenarios of ⚡ (TURBO) power support prior to riding your E-bike on public roads. Try to practice these scenarios on a parking lot or in a traffic-calmed street. Once you feel comfortable using the two ⚡ (TURBO) modes, you can start riding your E-bike on public roads.



Image 5.17

Light button (image 5.18)

By default, the light switches on when you start your 25 km/h E-bike. With the light button on the display, you can switch the light off and on while cycling as you please. Section 5.4.3 (The menu & submenus for settings) explains how to turn off the default setting (light switches on when the system is turned on).

Please note! Of course, it is mandatory to always have proper lighting while riding your E-bike in the evening time. We recommend that you also keep your lights on during the daytime.



Image 5.18

5.4.2 Display content**Battery status (image 5.19)**

The battery icon shows the charging status of the battery. One bar represents 20% of full capacity (half bar represents 10%). If only one bar is shown, only 20% of the maximum capacity of the battery is left and the bar will turn from green to orange. It is about time to recharge the battery. When only half a bar is left and it turns from orange to red, there is less than 10% battery capacity remaining. Recharging of the battery is urgently needed.



Image 5.19

Display	Capacity
5 bars light up green	≤ 100%
4,5 bars light up green	≤ 90%
4 bars light up green	≤ 80%
3 bars light up green	≤ 60%
2 bars light up green	≤ 40%
1 bar lights up orange	≤ 20%
Half bar lights up red	≤ 10%

Additionally, you can check the charging status with the LED on the battery too (see section 5.5.1 Charging of the chargeable battery). To save battery capacity, it is not possible to choose support level MAX if 10% or less battery capacity is left. With 5% or less capacity remaining, only the ECO level of support is available. At 2% remaining battery capacity the system will switch to level N.



Image 5.20

Level of motor support (image 5.20)

The white bars in the upper part of the screen show the selected level of motor support. See section 5.2 for the various levels of electric motor support and their recommended riding situations. Section 5.4.3 Submenu ASSIST/REGEN helps to set the support levels according to your personal riding preferences.



Image 5.21

Speedometer (image 5.21)

The main display in the centre of the screen will show the actual riding speed.



Image 5.22

Regeneration (image 5.22)

The green bars show the actual amount of regenerative power you get from the system in case you have selected the recuperation = regeneration mode in the menu. See section 5.4.3 Submenu ASSIST/REGEN for the menu of regeneration. The more bars (max 4) the display shows, the more regeneration you get back from the system.

Battery consumption (image 5.23)

The red bars show the actual battery consumption. The more bars (max 5) the display shows, the more your battery is being drained. Of course, higher consumption will reduce your range more rapidly.



Image 5.23

5.4.3. The menu & submenus for settings

Press **INFO (•) button for 3 seconds** to enter the Settings menu.



Navigate with the arrow (↑) and (↓) buttons and confirm your choices with the **INFO (•) button**.

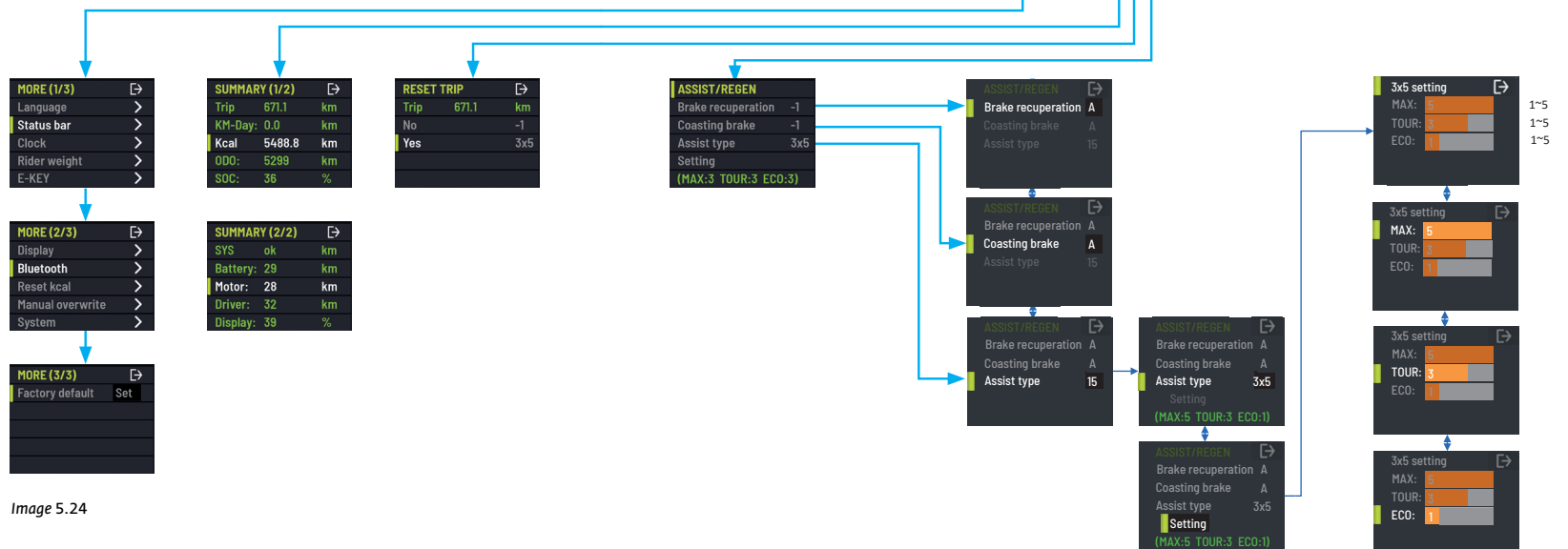


Image 5.24

Submenu ASSIST/REGEN

Setting > ASSIST

With the Assist submenu you adjust the support levels according to your own personal preferences. You have two options for Assist settings:

3x5

There are 3 basic levels of ascending motor support: ECO, TOUR and MAX. Each basic level can be set with 5 sublevels from 1 to 5 to meet your personal preferences. The factory default settings for each basic level are 3. The example of image 5.24 shows MAX with level 5, the strongest support and ECO with level 1 the least support. Once the levels being set, while riding your E-bike you choose with the (↑) and (↓) button the 3 basic levels ECO, TOUR en MAX in 3 steps. You cannot change the settings for the sublevels. This must be done in the Assist menu again.

15

With this option the motor support levels increase gradually in 15 steps from 1 to 15. From ECO in level 1 (least support) you go with the (↑) and (↓) button in 15 steps linearly to MAX in level 5 (max support). This can be done during cycling and there is no need to go back to the Assist menu.

Setting > REGEN

Regen means the regeneration and recuperation of electric energy back into the battery pack (see section 5.3 Regeneration). There are two regen functions:

- Regeneration through braking: On/Off
- Regeneration while coasting and freewheeling: On/Off

And both braking as well as coasting regeneration have 5 levels of regeneration:

- Automatic
- -1 (light)
- -2 (medium)
- -3 (strong)
- 0 (no regeneration).

The Regen factory default setting has regeneration turned off for both braking as well as for coasting. In image 5.24 the settings for brake & coasting regeneration were set to A, automatic regeneration.

Submenu MORE

With the submenu MORE you can adjust following parameters: the language of the display, the information displayed during riding, the clock, weight of the cyclist, settings for the E-KEY and the display settings. Also, you can connect your smart phone through Bluetooth with the Klever display and you can reset trip and calories to zero.

Setting MORE > Language

The display can be shown in the language of your choice (NE, DE, EN, FR, IT, US).

Setting MORE > Status bar

Seven types of information can be shown on the major display by default. With a short press of the INFO (•) button you can go through the loop of these seven types of information (see section 5.4.1. Function of each button). And you can hide any of those in case you do not need them while riding.

Setting MORE > Clock

Time can be adjusted or can be synchronised with your smart phone.

Setting MORE > Cyclist weight

Input the cyclist's weight for the proper calculation of your calorie output.

Setting MORE > E-KEY

The two E-KEYS supplied with your bike are being paired with the E-drive system by your Klever dealer upon purchase. You have two options for the E-KEY functionality:

1. E-KEY must always be inserted

When you turn on the system the display will read "insert E-KEY". You have to insert the E-KEY to activate the system. In case you start to ride without inserting the E-KEY, the alarm will go off and the motor will be locked. Once you have inserted the E-KEY and the system is being activated, you can remove it and the system will continue to operate until you turn off the system. After that the motor lock is being activated. The next time when you turn on the system again, the display will ask again for the insertion of your E-KEY.

2. Motor lock option YES or NO

The start-up procedure is the same: the display will ask to insert the E-KEY. In case you remove the E-KEY while the system is still on, the display will ask whether you want to lock the motor or not:

- Once you select NO, you can continue to cycle. After you have finished cycling, you turn off the system with the On/Off button. The next time when you turn on the system, you will not need the E-KEY to activate the system. However, in case you have turned on the system, and you do insert the E-KEY, then you turn back to the loop of the NO/YES-choice.
- Once you select YES, the system will be turned off instantly and the alarm and the motor lock will be activated. In case you start to ride your bike now, the alarm will go off and the motor will be locked. In case you turn on the system with the Power button, then the display will ask to insert the E-KEY again. After you have inserted the E-KEY, you can take it out and put it into your pocket. Then the option menu shows again the NO/YES-choice for the Motor Lock etc., etc.

Setting MORE > Display > Sound

The system's acoustic sound can be turned ON or OFF.

Setting MORE > Display > Brightness

The brightness of the display can be adjusted.

Setting MORE > Display > Light

When the system is switched on the headlight and tail light of your 25 km/h. Klever E-bike turn on automatically as well. With this menu you can turn off this default setting. With the Light button on the display, you can choose to turn the lights off or on while the system is turned on. We recommend leaving the lights always on, during the day as well.

Setting MORE > Bluetooth

By Bluetooth connection you can use your smart phone as a dashboard to show the information from the bike system.

Setting MORE > Reset Kcal

The Kcal can be reset to zero.

Setting MORE > Manual overwrite

This setting can be adjusted by your Klever dealer.

Setting MORE > System

This is the system information relevant for your Klever dealer to execute a system diagnosis.

Setting MORE > Factory default

You can set your bike back to factory default settings.

5.5 Rechargeable battery

Your Klever E-bike has a high-quality lithium-ion battery with a big capacity. For technical details, please refer to chapter 14. Technical data. The status of the battery can always be checked through the LED light button, next to the charging socket of the battery (image 5.25). Press the button and the LED will light up either red, yellow or green. If no light, then the battery could be broken. Please have your local dealer check the battery.

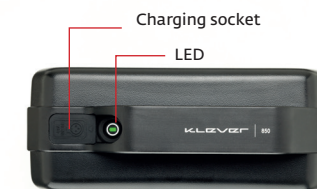


Image 5.25

Red	Capacity < 35%, battery should be charged
Yellow	Capacity 35 – 75%, battery can be charged
Green	Capacity > 75%, battery can be charged

The battery is automatically protected from overheating, overcharging and deep discharging. It is very user-friendly. Nevertheless, you should consider some points in order to maximise the life and performance of the battery.

- You can charge your lithium-ion battery at any time. Even if it is not completely discharged. In practice, it is even better to charge it again after short distances.
- Your battery has a lifetime of 700 charging cycles. One charging cycle means a full charge of the battery (0 – 100% capacity). Partial charges can be done more often. See chapter 9. FAQ's and chapter 12. Warranty for more information about the battery's lifetime after 700 cycles.
- When the battery is not being used for more than 2 months, it should be recharged as a low amount of self-discharge is common.
- Store the battery, if possible, in a dry, cool and dark place. The ideal storage temperature is between 5 – 20 °C. Avoid exposing the battery to direct sunlight. Temperatures over a longer period of more than 45 °C or below - 10 °C can cause permanent damage.

- In winter, you should never start with a cold battery. The capacity of a cold battery is significantly reduced and consequently will have a lower range.
- A battery which is exposed a long time to frost, should be gently warmed in the ambient temperature of a heated room, prior to starting.
- In case you need to park your E-bike outside for a long time during the cold season, remove the battery and store it in a heated room. Since the battery is very easy to remove.
- Also, the battery should be charged at moderate temperatures (15 – 25 °C). Avoid charging in direct sunlight or near heaters, as well as charging outside in winter at low temperature.
- Do not expose the battery to humidity, in order to prevent corrosion of the charging socket and the plug contacts.
- Protect the battery against mechanical damage and don't drop it. Mechanical damage can cause overheating and the battery could catch fire.
- Do not use any other type of charging unit, except the dedicated Klever chargers, since this may damage the battery and may cause overheating or fire.
- During charging, neither the charger nor the battery should be exposed to humidity, in order to prevent short circuits and electric shocks.
- Should the battery be broken or become defective, seal the contacts with tape and take it to your dealer or contact our technical hotline.
- Never under any circumstances open up the battery yourself. This is dangerous and could damage the battery and it may even catch fire. The warranty will be void if you do so!

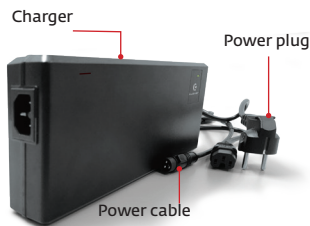


Image 5.26

! **Caution! Never place the battery on the heater and never try to heat it with a hair dryer.**

! **Caution! Charge the battery exclusively with the proprietary Klever charger which comes with your E-bike (image 5.26).**



Do not dispose of the battery into household waste. It must be disposed of properly. It is best to take it to one of our Klever dealers, who can take care of the disposal properly.



Please note! Resuming:

- **Charge the battery only with the proprietary Klever charger or any other original Klever charger.**
- **The battery can be recharged any time, even after short trips.**
- **Avoid prolonged temperatures below -10 °C and above 45 °C.**
- **Never start with a cold battery.**
- **After an extended period of storage, the battery should be recharged.**
- **Protect the battery from humidity.**
- **Protect the battery from mechanical damage.**
- **Never open the battery yourself.**

5.5.1 Charging the battery

You can charge the battery on (image 5.27) or off bike. For instance, indoors during the winter time (image 5.28). Charging at any time, even after a partial discharge (e.g., after a short distance of a few kilometres) is possible. There is no need to wait until the battery is completely discharged, as it has no memory effect. To remove the battery pack, refer to section 5.5.3. For the technical details of the charger please read chapter 14. Technical data. To charge the battery, do following:

- You can monitor the charging process on the basis of the indicator LEDs on the charger and battery.
- Connect the power cable to the charger.
- Insert the power plug of the charger into the wall socket, the LED will start to flash red.
- Once the LED lights steady red the charger is ready for charging.
- Connect the socket of the charger into the socket of the battery. The charging process will start automatically.
- The LED on the charger switches to flashing yellow light, charging begins.
- The LED indicator turns to yellow continuous light. The battery is charged to about 35%. The charging is in progress.
- The LED changes to flashing green, the battery is about 75 – 90% charged.
- The LED is on solid green, the battery is now fully charged and the charging process is complete.
- Disconnect the power plug from the wall socket.
- Unplug the socket of the charger from the battery socket.

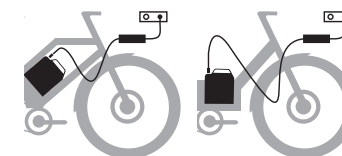


Image 5.27




Image 5.28


The LEDs on the charger and battery document the state of charge of the battery.


State of charge	Charger LED	Battery LED	Note
	Flashing red		Error code: check connections
	Steady red		Charger ready to charge
0%	Flashing yellow	Flashing red	Capacity very low; charging starts
< 35%	Steady yellow	Flashing red	Normal charging
35 – 75%	Steady yellow	Flashing yellow	Normal charging
75 – 90%	Steady yellow	Flashing green	Normal charging
> 90%	Flashing green	Flashing green	Final charging
100 %	Steady green	No LED colour	Fully charged

The charging of an empty rechargeable battery (from 0% to 96%):

- Of 570 Wh will take about 7 hours with a 2A charger.
- Of 850 Wh will take about 3.5 hours with a 6A charger.

 **Please note! For a longer battery life, make sure that the battery is no longer connected to the charger after the charging process has been completed. Likewise, the charger should be disconnected from the power supply.**


 **Please note! Battery and charger become warm during the charging process. Ensure adequate ventilation of the battery and charger. The vent holes should not be covered. Place the charger and battery on a clean surface. Prevent contamination of the charging sockets on the charger and the battery. Avoid humidity and direct sunlight.**

 **Please note! In case the charger is damaged, contact an authorised Klever dealer. Never open the charger.**

5.5.2 Battery range

The range specification of the system as indicated in image 5.29 can only be relative, as it strongly depends on:

- The lower the selected level of motor support, the bigger the range of the electric system.
- The technical condition of the bike (oiled chain, proper tyre pressure, etc.).
- The total weight of the system (E-bike + cyclist + luggage).
- The topography of the chosen route.
- And the weather conditions (head- or tailwind, winter or summer).

 **Please note! In winter, the range can be up to 30% less capacity due to lower temperatures.**

Battery power

e-bike

distance in Km

570Wh



25

45

25

75

125

175

225

275

325

65*

30*

850Wh



25

45

100*

45*

1200Wh



25

45

150*

70*

AVERAGE RANGE

Battery performance given a mixture of conditions.

MINIMUM EXPECTED RANGE

At low temperatures, poor weather conditions, heavy load, maximum assistance, upright riding position.

MAXIMUM EXPECTED RANGE

At most favourable weather conditions, low load, low assistance, low resistance and sporty riding position.

RANGE CALCULATION BASIS

This graph is only an indication of minimum, average & maximum ranges. Klever cannot guarantee specific ranges based on conditions that may vary per case.

Image 5.29

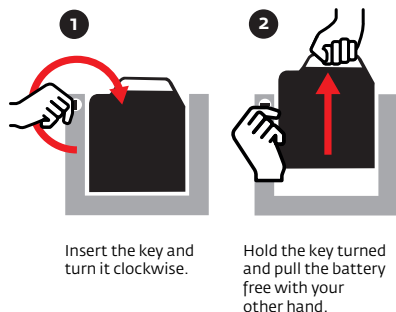


Image 5.30

5.5.3 Removal & mounting of the battery pack

The battery is automatically locked in place with the battery lock and thereby protected from theft. To remove the battery, first turn off the system using the On/Off button on the display. Turn the key in the battery lock clockwise up to the stop and pull out the battery with the handle from its docking station (image 5.30). Now you can charge the battery separately or store it safely for a longer break.

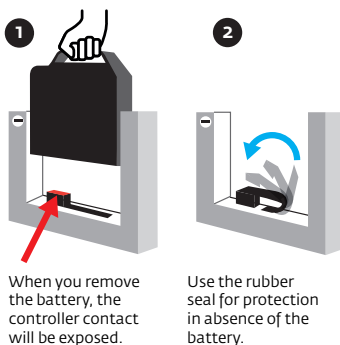


Image 5.31

Having removed the battery pack from your E-bike, please don't forget to protect the contact connector of the controller unit with the rubber cover. We advise to always use the rubber cover when the battery is taken out of the docking station (image 5.31).

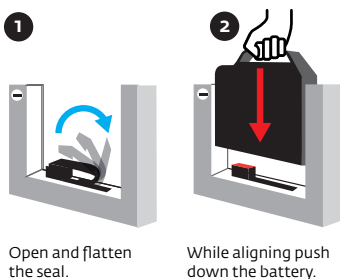


Image 5.32

Mounting the battery in the docking station

Insert the battery carefully. Make sure the groove of the battery casing is carefully inserted into the rail of the bicycle frame. Then slide the battery pack gently down until you hear the lock engage and the electronic contacts are connected (image 5.32). For this operation you do not need the key of the lock. The lock will automatically snap in place and the battery will be locked. The system is ready for operation and the battery protected from being stolen.

Caution! Do NOT ride your E-bike without battery! Prior to starting the system, make sure to check whether the electronic contacts of the battery are engaged and locked in place. Riding your E-bike without the battery could possibly damage the Klever BIACTRON system.

5.5.4 Transport of the battery pack

E-bike battery packs are subjected to the IATA Dangerous Goods Regulations, which are dealing with the safe transportation of dangerous goods in commerce. As the owner of a Klever E-bike you can transport the battery pack by road and train without limitations and any further requirements. However, when being transported by third parties (e.g., forwarders, post or via air) special requirements on packing and labelling of the battery pack must be observed. In that case, please consult an expert for the transport of hazardous materials.

Ship the battery only when the casing is undamaged. Tape or mask off open contacts and pack up the battery in such a manner that it cannot move around in the packing. And please also observe detailed national regulations.

Please note! In every case of transporting a broken or damaged battery, always refer to an authorised Klever dealer. The dealer can inspect the battery and, in case necessary, forward the broken battery to Klever Mobility.

5.6 Elementary diagnostics & troubleshooting of the electric system

The system will not turn on

Check all connections. Check whether the battery is sitting correctly in the docking station in the frame and whether the battery lock is engaged.

The system can be turned on, but does not give any electric motor support

Check all connections from and to the rear wheel motor.

Please note! In case it is not possible to solve the above problems, contact your local Klever dealer or our technical hotline.



Image 6.1

6. Bicycle parts of your Klever 25 km/h E-bike

This chapter explains function, maintenance, service and operation of the conventional bicycle components which are not part of the electric drive system. You will find additional information in the accompanying manuals of the component suppliers.

6.1 Saddle & handlebar adjustment

Your Klever 25 km/h E-bike comes in two frame sizes (M = Medium and L = Large). Fitting the frame size to your body can be done with adjustment of saddle, stem and handlebar. Your dealer can do this on the spot. In case you want to do the settings for yourself or for another cyclist, the adjustment is briefly described below:

Caution! All work described requires the expertise of a bicycle mechanic and appropriate tools. Use a torque wrench to tighten the bolts and never exceed the maximum torque of the bolts. All necessary tooling and information on the recommended torque can be found in chapter 14. Technical Data.

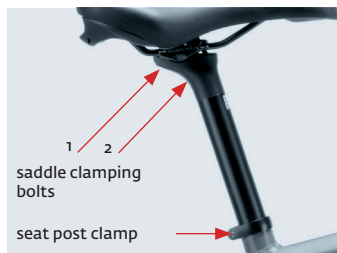


Image 6.2



Image 6.3

Adjustment of the saddle height

You will find the optimal saddle height if you touch the pedal with the heel of your stretched leg, when sitting on the saddle. Without having to overstretch your leg and hip. Alternatively, you bring the ball of your foot to the centre of the pedal. Your knee should be slightly bent (image 6.1).

Loosen the seat clamp bolt with a 6 mm. Allen key (image 6.2) and move the seat post with the saddle to its proper height. Align the saddle with the frame using the saddle nose and the bottom bracket or the frame tube as references. Fasten the bolt of the seat clamp again and check the correct height of the saddle. Repeat the process if necessary until you find the correct saddle height.

The distance between saddle and handlebar (by pushing the saddle forward or backward on its rails) and the saddle angle are adjusted with the 2 saddle clamping bolts of the seat post and a 5 mm. Allen key (image 6.2). Generally, the saddle should be positioned horizontally.

! Please note! Pay attention to the recommended torque when tightening the various bolts (see chapter 14. Technical Data).

! Caution! The seat post may never be installed over the minimum insertion mark (image 6.3). Otherwise, the post could possibly break during riding, which could lead to injuries.

Handlebar adjustment

The handlebar can be adjusted to your personal preferences, by changing the angle of the handlebar stem and the height of the handlebar. Your Klever dealer will be happy to set the handlebar to your liking. However, in case you intend to adjust the handlebar by yourself, then proceed as follows:

- Loosen the big pivotal M8 bolt of the adjustable stem with a 6 mm. Allen key and adjust the angle of the stem (image 6.4).
- With the angle adjustment you can move the handlebar towards the rider as well as further away from the rider. Once you find the proper position of the handlebar, tighten the M8 bolt with the correct torque.
- After adjusting the stem, you may have to adjust the position of the handlebar too. Loosen the 2 M5 bolts from the bottom side of the head of the stem (image 6.5). Tighten the 2 M5 bolts with the proper torque after adjustment.
- Please note that the adjustment of the angle of the handlebar may have altered the position of the brake levers, the display and the shifter too. If necessary, you can adjust the position of these components as well. Loosen the Allen key bolts and screws of the display, brake levers and shifter. Turn display, brake levers and shifter into the correct position. And keep in mind that your hands should be resting on the handlebar in a relaxed way and should not be forced into an unnatural position (image 6.6). Finally tighten the Allen key bolts with the correct torque.
- You may have to repeat these steps a couple of times in order to find the most convenient position according to your liking and needs.
- The standard extension length of the Klever adjustable stem is 90 mm. For those who wish to have a sportier riding position, a 110 mm. extension length is available. Changing the stem is a job which needs to be left to an authorised Klever dealer.

! Caution! Please check whether the handlebar is correctly tightened. You should not be able to twist the handlebar while putting full force on the grips.



Image 6.4



Image 6.5



Image 6.6

6.2 The suspension front fork

The suspension front fork of your Klever 25 km/h E-bike is pre-set with factory settings. However, it has three adjustment options with which you can set the suspension to your own preference. You can have your Klever dealer do this, but you can also adjust a number of settings yourself.

Setting sag (precompression)

Sag is the amount of travel the suspension compresses when you sit on your E-bike. The compression depends on the combination of your weight (+ luggage) and the amount of air pressure in the lefthand fork leg. The air pressure defines how stiff or smooth the suspension responds to the unevenness of the road surface. The rule of thumb says that 20% sag of the total travel of the suspension is a proper way to start the setting (refer to the table below).

Weight kg.	Air pressure Psi
< 63	100 – 120
63 – 72	120 – 135
72 – 81	135 – 150
81 – 90	150 – 170
> 90	> 170
Max Psi	< 265

Varying the air pressure in the lefthand fork leg, you can:

- Make the suspension more smooth = lower air pressure = more sag (e.g., 25% of total suspension travel).
- Or make the suspension more firm and more direct = higher air pressure = less sag (e.g., 15%).
- It is advised not to have more than 30% sag.



The setting of the air pressure of your front fork requires the use of a dedicated suspension pump for front forks and rear shocks. Never use a high-pressure pump or a foot pump. This could damage the internals of the fork leg. Setting of the sag can be best done at your dealers. The workshop has the proper tools.

Setting Rebound

With the rebound switch at the bottom of the righthand fork leg you decide how smooth or how direct the fork after compression bounces back (image 6.7). Going from the

neutral position in the centre, the switch has two clicks to the right in order to make the rebound slower and more sluggish. And from the neutral position the switch has two clicks to the left in order to make the rebound more fast and smoother. This setting does not require any tooling and it can be done any time by yourself.

Lock-out

With the lock-out on top of the righthand fork leg you can lock the suspension (image 6.8). In position A the suspension is fully functional. In position B the suspension is fully locked. The Lock-out function is best used on smooth and straight roads only. On badly paved roads it is always best to use the full functional amount of suspension travel.

Maintenance

Have your dealer check the front fork during the annual service inspection. Some basic tips for your home maintenance:

- Clean the smooth surfaces of the stanchion tubes with a cloth and a little water.
- After cleaning spray some water-repellent oil on the stanchion tubes for lubrication of the bushings and for a plush suspension function.



Caution! Never use a high-pressure cleaner or aggressive detergents for the maintenance of the front fork. Pay attention to the maintenance instructions in the manual of the fork supplier.

6.3 Disc brakes

Your E-bike has disc brakes (image 6.9) with an excellent braking performance, even under rainy weather and other bad weather conditions. They are low maintenance and do not wear the rim. While actuating the brake lever, the oil pressure is being transmitted through the hose into the brake calliper. This makes the brake pads contact the disc rotor.

Both brake levers also have a brake sensor that immediately interrupts the electric motor support when one or both levers are being actuated and that also activates regeneration (see also section 5.4.3 Submenu ASSIST/REGEN).



Image 6.7



Image 6.8



Image 6.9

- Please note! New brake pads must be run-in in order to achieve their best deceleration values. By braking at least 25 times from approximately 25 km/h to complete standstill the brake pads will achieve their maximum brake power.**

Squealing brakes

Not properly run-in brakes do not reach their best deceleration values and are prone to vibrations and loud squeal. The brake pads and disc rotors must be regularly checked for wear. If rotors and brake pads are worn, they will need to be replaced. In case the brake performance is getting less and you are losing brake power or you can push the brake lever through to the handlebar without any braking effect, the brake system must be bled (purged). Bleeding and the replacement of worn brake pads and rotors is better left to authorised Klever dealers.

- Caution! In case the brake performance is decreasing or the system shows signs of leakage, do not continue to ride your E-bike and go and see your local Klever dealer immediately.**

- Caution! ! Oil or grease on the brake pads and disc rotors will reduce the effect of the brake substantially. Prevent in any case, while cleaning the bike and lubricating the chain that oil or other liquids can contaminate the brake pads and disc rotors. Contaminated brake pads cannot be cleaned and need to be replaced immediately. You can clean the disc with brake cleaner or warm water and a little detergent if necessary.**

- Please note! Ride more cautiously under humid and rainy conditions because the stopping distance could be longer.**

More information on disc brakes, the replacement of brake pads and disc rotors and the wear of these components, can be found in the dedicated manual of the brake supplier.

6.4 Belt drive & 9 speed gearbox

Your Klever E-bike comes with a user-friendly and low maintenance drive train. Instead of the traditional drive train with chain and derailleur gear, it is equipped with a belt and a fully enclosed 9 speed gearbox. With this unique drive train, you never have dirty pants again.

6.4.1 Belt

The belt drive (image 6.10 & 6.11) is whisper-quiet while pedalling. In addition, the belt drive is very low maintenance because it does not require any grease or lubrication at all. In fact, grease and lubrication should be avoided! Occasionally cleaning the belt with some water will suffice. Because the belt does not need any grease it will hardly attract any dirt and debris from the street.

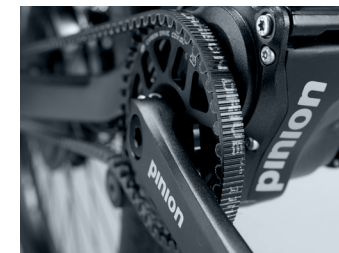


Image 6.10

- Your local Klever dealer has the proper tools for the tensioning of the belt and the checking of the belt wear. We strongly recommend that you leave all work on the belt, including disassembly and assembly of the rear wheel, to your Klever dealer.**

- Caution! Just like with a chain drive, keep your fingers away from the belt drive. Once your fingers get pinched while the chainwheel is turning, this may lead to serious accidents & injuries. The upper part of the belt is covered with a belt guard, which has the same functionality like a chain guard. It protects your pants and prevents them from getting stuck in between the belt and the chain wheel.**



Image 6.11

- Please note! If you do need to touch the belt, for instance in order to clean it or to mend a puncture, remove the rear wheel, then first turn off the BIACTRON-system and take the battery pack out of its docking station.**

6.4.2 9 Speed gearbox

The Pinion gearbox (image 6.10 & 6.12) is fully enclosed and runs with low maintenance in a whisper-quiet oil bath. The 9 speeds are offering a gear range of nearly 570%. With the gear ratios of your E-bike and a pedalling cadence of 60 revolutions per minute, you cycle as easy in the smallest gear with ECO motor support 8 km/h. uphill as with the biggest gear with MAX motor support 25 km/h. on a flat road. All intermediate gears from 1 (smallest) to 9 (biggest) are well balanced with ascending steps of 24%.

With the twist shifter integrated in the righthand grip you shift the gears (image 6.13). You can shift multiple gears in one time. Even without pedalling or when reverse pedalling. You can shift under load. However, in case you take the load off the pedals you will have a smoother shift. More specifically in the following cases:



Image 6.12

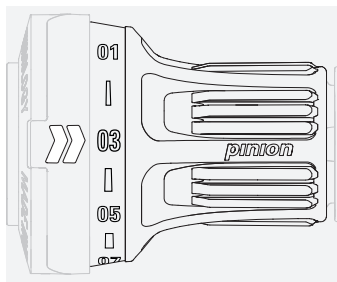


Image 6.13

- When shifting down from a bigger to a smaller gear;
- When shifting up from the 3rd to 4th gear;
- When shifting up from the 6th to 7th gear.

In general shifts will go directly and smoothly. You choose any of the 9 gears with the 9 digits on the gear display on the side of the twist shifter (indicating the gear you are in). The digit should be aligned with the >> icon (image 6.13). In case the shifting does not function smoothly and the digit of the chosen gear is not well aligned with the gear display, then you should check the settings of the shifting cables:

- Check the cable terminals of the 2 shifting cables (image 6.14). There should be no play between cable terminal and cable stop. At the same time the cable terminal should not be tensioned.
- The twist shifter can have a little play in the direction of turning, not more than 2 mm. back and forth.
- In case there is play on the shifting cable terminals, increase the cable tension. Turn both adjustment screws a quarter turn counter clockwise (image 6.14). Check the cable tension and repeat in case necessary.
- In order to release the cable tension, you turn both adjustment screws a quarter turn clockwise.
- Once you have reached the proper cable tension, then shift to the 9th gear and check whether the digit 9 is properly aligned with the >> icon on the gear display.
- You will notice that while turning adjustment screw 2 (image 6.14) a quarter turn clockwise + adjustment screw 3 a quarter turn counter clockwise, the twist shifter will rotate a bit into the direction of the icon for the 8th gear.
- Vice versa, turning adjustment screw 2 a quarter turn counter clockwise + adjustment screw 3 a quarter turn clockwise, the twist shifter will rotate a bit into the direction of the digit 1. In this way you will be able to reach the proper settings for smooth shifting.

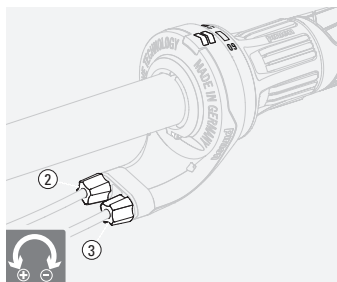




Image 6.14

 **Please note! The smooth functioning of the two shifting cables is essential for the overall functioning of the gearbox. In case the shifting cables are old, damaged or worn out, then they should be replaced. This is a service job for a specialist. You better turn to your local Klever dealer.**

 **Please note! The service interval for the oil change of your gearbox is 10,000 km. or 1 year. This too is a service job for a specialist with workshop experience. Please ask your Klever dealer for the oil change.**

More information on the belt drive and the gearbox can be found in the dedicated manuals of the suppliers.

6.5 Lighting

The lighting of your 25 km/u E-bike corresponds with the Belgian & Dutch Road Traffic Act; it has an official mark: indicated by the letter K. The lighting is supplied by the battery power of the vehicle. The headlight is a LED with high output and stand light function (image 6.15). The tail light is a bright LED too with stand light function (image 6.16).

In case of lighting failure please verify that the light switch on the display is switched to "On", check all contacts at headlight and tail light. Check all cables for damage. If you don't find any errors, you should be looking for repair at an authorised dealer immediately.


 **Please note! A non-functioning light is illegal and endangers your life on the road. E-bikes without lights are easily overlooked in the dark. You run the risk of serious accidents.**



Image 6.15

More information on the headlight and the taillight can be found in the enclosed supplier's manual.

6.6 Wheels & tyres

Wheels are one of the most stressed components of your vehicle. They contact the road; they provide propulsion and they absorb the road bumps. Due to the heavy use, they should be regularly checked. In case of radial or axial play or broken spokes, the wheels should be repaired or trued by an authorised Klever dealer.

For the replacement of a tyre, the wheels must be removed from your E-bike. Also, for the mending of a puncture this could be necessary. Nevertheless, removal and installation of the rear wheel of a belt drive is a highly specialist job, requiring experience and professional tools. Restoring the correct tension of the belt, after installation of the rear wheel, in particular is essential for the proper functioning of the belt drive. We therefore recommend that you have the disassembly and assembly of the rear wheel carried out exclusively by the workshop of your Klever dealer.

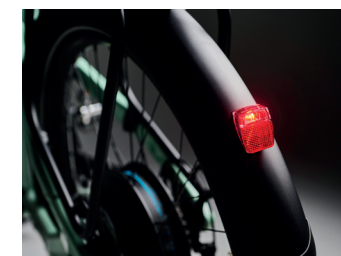


Image 6.16

- !** **Caution!** In case you need to work on the drive train or the rear wheel of your E-bike, you need to make absolutely sure that the BIACTRON-system is turned off and the battery pack taken out of the docking station. If not turned off, your fingers could get stuck between or pinched by chain, cassette and chain ring. This could lead to serious injuries.

Removal of the front wheel

- Loosen the thru-axle of the front wheel with a 6 mm. Allen key. Turn the Allen key counter clockwise. Now take the thru-axle out (image 6.17).
- Pull the front wheel out of the front fork.
- Block the brake pads of the disc brake by inserting the enclosed pad separator into the calliper (image 6.18).
- The assembly of the front wheel is done in reverse order.
- While assembling, insert the disc brake rotor carefully between the two brake pads.
- Pay attention to the correct torque of the thru axle (max 13 Nm).



Image 6.17



Image 6.18

- !** **Caution!** Disc brake rotors can be very hot after riding & braking. Let them cool down prior to disassembly of the wheels.

Tyres

The tyre size can be found on the sidewall. It is printed in millimetres and inches: 27.5" x 2.20" and 56 – 584 mm. The wheel has a diameter of 584 mm. (27.5") and a width of 56 mm. (2.20").

- i** **Please note!** The recommended tyre pressure is indicated on the sidewall of the tyres (3.5 – 5.5 bar; 50 – 80 Psi)
- i** **Please note!** Regularly check the correct tyre pressure and pressurise your tyres if necessary. The tyre uses an inner tube with Schrader valve. So, you can check and inflate the tyre at any gas station.

- !** **Caution!** Above or below, never exceed the recommended air pressure range. The tyre and the tube can be damaged and this may lead to sudden loss of air with risk of an accident. Too low tyre pressure causes higher rolling resistance. As a consequence, this reduces the range of your battery.

Disassembly, repair & assembly of the tyres

Regularly check the tyres for cracks and for its thread pattern height. In case you find that cracks or sharp objects have damaged the fabric of the tyre or the thread pattern is no longer sufficient, replace the tyres. If in doubt, ask your Klever dealer who can verify the tyre and replace it.

In the case of a flat tyre, do as follows:

- Always use plastic tyre levers.
- Remove the wheel as described above.
- Deflate the tyre and push a tyre lever underneath the tyre bead opposite of the valve and lift the tyre over the rim flange.
- Push the second tyre lever underneath the tyre bead in a distance of 10 cm. from the first one (image 6.19). If the tyre is still very tight around the rim, then use a third tyre lever as well.
- Now, you can lift the tyre over the whole circumference of the rim with the help of one of the levers. The inner tube can be removed.
- In case the leak cannot be found easily, hold the inflated inner tube into a bucket of water and look for the rising air bubbles.
- Repair the tube according to the instructions on the repair kit. Or if necessary, replace it. In case of replacement, make sure you buy the correct size inner tube.
- Check the inside of the tyre for sharp objects that could have caused the puncture and remove them. If the fabric of the tyre is damaged, replace the tyre too. Start the mounting of the inner tube by inserting the valve into the valve hole in the rim and inflate the tube with very little air pressure until it is wrinkle-free.
- Now mount the inner tube without any creases underneath the tyre (image 6.20).
- Starting opposite of the valve, lift the tyre bead over the flange of the rim and pull it deep into the rim. Lift the rest of the tyre by hand over the rim's shoulder. Do not use tyre levers, as this may damage the inner tube.
- Push the valve a little back into the tyre, so that the bead of the tyre is correctly seated in the rim.
- Pull the valve back again and inflate the inner tube to the recommended tyre pressure.



Image 6.19



Image 6.20

6.7 Luggage carrier & transport of luggage

Your Klever E-bike has a robust and durable aluminium luggage carrier (image 6.21). The carrier is compatible with the majority of all standard panniers, and you can use it in conjunction with an extensive range of accessories. Please note, the maximum load capacity of the luggage carrier is 25 kg.

i **Please note! When transporting luggage make sure that you do not exceed the total maximum permitted weight of 150 kg., being the combination of E-bike + cyclist + luggage.**

! **Caution! The additional weight of luggage on your rear carrier changes the handling of your E-bike and makes the required braking distance longer as well.**



Image 6.21

6.8 Anti-theft protection

This Klever E-bike comes with a motor lock and immobiliser combined with an acoustic alarm system. The battery can only be removed from its docking station by unlocking the battery lock with the key (see section 5.5.3 Removal and mounting of the battery pack). We recommend to also use a robust and high-quality chain lock in order to be able to lock the vehicle to solid fixtures.

6.9 Accessories

Useful accessories can enhance the functionality and comfort of your E-bike and they can increase your riding pleasure too. These accessories are available at your Klever dealer.

i **Please note! Accessories must be compatible with your Klever 25 km/h E-bike. Incompatible accessories may influence and alter the riding characteristics of your bike and can lead to accidents. Best ask your dealer for information and advice.**

6.10 Child seat

In Belgium and the Netherlands, you may carry children up to the age of 8 years only with a decent back support. Therefore, on your E-bike carry children only with a child seat. You should install child seats with an appropriate DIN / GS approval only. Read and adhere to the instruction manuals of the seat manufacturer. If traveling in other countries, check the local rules and regulations. For instance, in Germany the rules are slightly different from those in Belgium and the Netherlands.

! **Caution! In case of parking your Klever 25 km/h E-bike, never leave your child in the child seat. Take the child out of the seat.**

i **Please note! Make your child wear an appropriate helmet. And always keep in mind that a child seat with a child will greatly affect the handling of the E-bike. The bike tends to lurch. Therefore, you should practice starting and riding it before taking part in road traffic.**

i **Please note! Do not exceed the maximum permitted weight of E-bike, cyclist and cyclist of 150 kg.**



Image 6.22

6.11 Bicycle trailer

Nowadays there is a wide variety of bicycle trailers with which you can safely transport children and luggage towed behind your Klever 25 km/h E-bike. Prior to purchasing one, make sure that the trailer meets the requirements of the Road Traffic Act. That it is not wider than 1 meter. That it can be safely connected to the E-bike and that the maximum payload of the bicycle trailer must not be exceeded under any circumstances.

Please take the time to confer with your Klever dealer and carefully read through the operating manual and safety instructions of the bicycle trailer before use! Finally make sure to practice riding with the trailer on a parking lot before participating in road traffic. In case you will ride your Y Muse 25 with a bicycle trailer in other countries, please check the local rules and regulations.



Caution! The additional load of the bicycle trailer greatly affects the handling of your E-bike. It will also extend the braking distance of your E-bike and it will decrease the range of your battery pack.

7. Wear, maintenance & inspections

Wear

Your Klever E-bike consists of many components, which are all subject to normal wear due to their function. Therefore, all following components should be regularly checked and if necessary, replaced immediately:

1. **Disc brake rotors & pads** are put under stress during each braking operation and wear as a consequence. Therefore, they must be periodically inspected and if necessary, be replaced immediately.
2. **Tyres & inner tubes** are subject to function-related wear and should be checked regularly. The air pressure and the depth of the tread profile must be checked regularly too. The air pressure should always be at the manufacturer's recommended operating pressure, which is printed on the tyre sidewall. In case the tread profile of the tyre is no longer deep enough or the tyre has cracked sidewalls, it should be replaced.
3. **Rims & spokes** are stressed while braking or riding over obstacles. Regularly check the concentricity of the wheel and the spoke tension. If the wheel has radial or axial play, this should be readjusted. In the event of spoke breakage, the broken spoke should be immediately replaced and the wheel should be re-trued.
4. **Chain, sprockets, chain wheels & derailleur pulley wheels** wear out normally. Regular cleaning and lubrication of these components will extend their service life substantially. They should, however, in case they are worn be replaced.
5. **Belt, rear sprocket, front belt wheel** are very robust and wear less than the components of derailleur drive trains. Unlike derailleur drive trains, belt drive trains should not be lubricated. Just clean these components every now and then with some water. During the annual inspection your dealer should check the tension of the belt and the wear of the individual components.
6. **Shifting cables & brake hoses** must be maintained regularly and replaced if necessary. Especially in case your E-bike is often parked outdoor and exposed to the weather.

7. **Hydraulic oils & lubricants** change over time and lose their effectiveness. Therefore, all lubrication points are to be regularly cleaned and re-greased in order to minimise the wear.

Maintenance

Regular maintenance and care guarantee a longer lifespan of your E-bike. You should regularly carry out simple cleaning and care yourself. And let your dealer do the necessary inspections. Never clean the vehicle with a high-pressure cleaner or a steam cleaner, as water may enter bearings, motor and electronic contacts. Water could damage these parts due to corrosion and short circuits. Clean your bike with a damp cloth and a mild detergent. Make sure that no electrical contact gets wet. The contacts can be maintained and conserved from time to time with a little care oil. Contact spray is too aggressive and doesn't preserve. All parts liable to corrosion should be maintained and preserved appropriately.



Caution! During cleaning and lubrication, avoid contact with oil and fat on the brake pads and disc brake rotors. The stopping power might deteriorate and could represent a serious risk.



Please note! Always ensure that the tyres are inflated within the manufacturer's recommended operating pressure, which can be found on the tyre's sidewall. Never go over or under the recommended range of tyre pressure.

The entire electrical system of your E-bike, such as the motor, the sensors, the wiring harness and the battery are maintenance-free. In case you meet unexpected problems with the system, contact our technical hotline (see chapter 17. Imprint) or consult an authorised Klever dealer.



Caution! Do not open the motor, the display or the battery. It is dangerous and this will immediately void the warranty.

Inspections

In order to keep your E-bike always roadworthy and updated to the latest technical status, it should be inspected regularly. We recommend after 500 – 1,000 km. or within 1 year after purchase to carry out the first inspection. Any further inspections should be carried out after every 2 to 3,000 km. or at least once a year.



Inspections should be executed by authorised Klever dealers.



Caution! In case inspections are not carried out or executed unprofessionally, this may significantly impair the functions of your E-bike or may even lead to accidents.



Please note! With regards to spare parts:

- **Klever 25 km/h E-bikes: make sure to only use original Klever spare parts for replacement and upgrades.**
- **Klever 45 km/h Speed E-bikes. Since these are Type-approval vehicles, make absolutely sure to only use original Klever Type-approved spare parts for replacement. The same applies to upgrades (e.g., winter tyres or suspension seat post). Only select components from the Klever Type-approval list.**

In general: in case you are not sure which spare parts to use, always contact your official Klever dealer or otherwise call our technical hotline.

8. Storage & transport of your Klever E-bike

Storage

Your E-bike should always be stored in a dry, covered place in order to minimise the effects of weather and avoid direct sunlight. In case you do not ride your Klever E-bike in wintertime, you should consider following:

- Store your E-bike well cleaned and lubricated in a dry place and cover it with a tarp. Winter storage in a garage is not ideal. Salt from salt spraying may enter your garage with your car. And this could cause corrosion of your E-bike.
- Protect the electrical contacts with a little care oil.
- The battery should be stored separately, ideally at a

temperature of 10 to 15 °C in a dry place. Fully charge the battery before the first ride in the spring.

- And after storage for more than two months, it is advised to recharge the battery (see section 5.5.1 Charging of the battery).

Transport

You can transport your E-bike by car or train. For transport by car, we recommend to use a tow bar bike rack, which is specifically designed for the transport of E-bikes and for heavier loads. Ask your Klever dealer for more specific recommendations.

Do not transport your E-bike on a roof rack. The heavier weight and the special frame tubes will make stable fixing of your E-bike on a roof rack impossible. In addition, the weight of the vehicle is usually higher than the maximum weight limit of the roof rack.

Prior to transporting your vehicle with a tow bar rack, you should remove the battery pack as well as other non-fixed accessories such as air pump and panniers. Additional protection should be given to electrical contacts of the battery connector on the frame. This can be done with a plastic bag to protect those parts from moisture and rain. Air flow may cause the moisture to enter into the electric system.

In case your car is big enough, then it is best to transport your E-bike inside the car.

Transportation of your E-bike by air will be nearly impossible. Unless you want to transport your E-bike without battery. For airlines these batteries are classified as IATA Dangerous Goods and consequently will not be transported. To be sure, ask your airline under which conditions the transport of the battery may be allowed. However, this could be quite expensive. For more information on the transport of the battery, please check section 5.5.4. Transport of the battery.

9. FAQ's

How far can I travel with one battery charge?

This depends on the outside temperature, the topography of the terrain, the technical condition and total weight of the E-bike. Tyres with low air pressure or high weight or riding in hilly terrain, reduce the range (see section 5.5.2. Battery range).

Battery	Range
570 Wh	40 – 125 km.
850 Wh	75 – 165 km.

This is a guesstimated indication of the range you may expect under similar conditions:

- Outside temperature 12 – 30°C.
- Flat and slightly hilly terrain.
- Total system weight between 95 – 105 kg. (cyclist's weight 70 – 80).
- Little to no wind.

Must the battery be empty before I can charge it?

No, you can charge the battery at any time, even if it is only partially discharged.

How can I protect my Klever E-bike from theft?

Your E-bike comes with starter and motor immobiliser. This electronic lock is combined with an acoustic alarm system, to be activated with the E-KEY and Lock-button on the display. The battery can only be removed from the frame by unlocking the battery lock with the key. We recommend to also use a high quality, robust chain lock in order to lock your E-bike to the solid fixtures.

Can I ride my E-bike in wintertime?

In general, there is no problem whatsoever to ride your E-bike at low temperatures. Store your battery in a warm place before you start your journey. Keep In mind that in wintertime at low outdoor temperatures the range may decrease by 30%.

Can I transport my E-bike via air?

Because E-bike battery packs are being classified as IATA Dangerous Goods for transport via air, many airlines refuse to transport the battery. In individual cases you may want to ask your airline, under which conditions and costs transport may be possible.

Do I need a liability insurance and do I need to wear a helmet?

No, you do not need an insurance. Because the electric support will be stopped at 25 km/h, this Klever 25 km/h E-bike is classified as an EPAC, an Electric Pedal Assisted Cycle. Therefore, it is considered as a regular bicycle and requires neither insurance nor wearing a helmet. However, we do recommend that you use a helmet for your own safety.

What to do with a defective battery pack?

Defective batteries do not belong in household waste and must be disposed of properly. It is best to take it to an authorised Klever dealer.

How many times can I charge my battery?

We guarantee that the battery after 700 full charge cycles or two years after the date of purchase still has 60% of its original capacity. Of course, you can charge the battery more often or use longer than two years. Because of the natural aging process over time the battery loses more and more capacity though. Moreover, in case you register your Klever battery on our website (www.klever-mobility.com), Klever extends the warranty term for the battery from 2 to 3 years. Within this term we guarantee that your battery still has 50% of its original capacity after 500 charging cycles. See chapter 12. Warranty too.

Does the warranty void, in case I do not stick to the recommended time intervals for inspections?

No, the warranty does not void. We recommend, however, for the vehicle's service life and for your own safety to carry out all recommended inspections.

Can I charge the battery with another charger?

No, the battery may only be charged with the dedicated, supplied Klever charger or other Klever chargers.

10. Klever X Pinion 25 EU Declaration of Conformity

The Manufacturer:

Klever Mobility Inc.
No. 8, Ln.76, Sec.3, Zhongyang Rd.,
Tucheng Dist.; New Taipei City 236
Taiwan

Represented the Benelux by:

Klever Mobility NL bv
Regulierenring 15
3981 LA Bunnik
Tel.: +31 30 210 2905
infoNL@klever-mobility.com
www.klever-mobility.nl

Hereby confirms for the product: Y Muse 25 km/h model year
2021:

X Pinion 25, model year 2023

Conformity with all applicable directives from the European
Machinery directive: **2006/42/EC**.

This electric bicycle also conforms to all the directives from the
Electromagnetic Compatibility directive: 2004/108/EC.

In addition, the following harmonised European Standards
apply: the **EN 15194:2017 standard** for bicycles with electric
pedal support (EPAC's) and the **EN-ISO 4210 standard** for city
and touring bicycles in which the technical safety requirements
and test methods are being described.

Technical documentation by:

Klever Mobility NL bv

11. Intended use of your Klever 25 km/u E-bike

Your Klever 25 km/h E-bike is designed according to structural requirements for a particular purpose. Thus, the usage is limited to specific areas. Your E-bike is designed based on the construction and equipment for use on public roads, normal paved roads. It is equipped in accordance with the Belgian and Dutch Road Traffic Regulations. And therefore, it is allowed to ride on public roads. In order to keep your bike always running and roadworthy, regular reviews and inspections are required or necessary repairs should be made immediately. Klever Mobility is not liable in case this Klever 25 km/h E-bike is used against its originally intended purpose nor for damages resulting from a breach of important instructions in this manual.

This is particularly true in case of damage caused by overloading or off-road riding or by the improper repair of defects. The same applies to non-compliance with the maintenance, operation and maintenance requirements described in this manual.

12. Product liability & warranty

According to European warranty laws you are entitled to a period of 2 years for product liability, duty of care and warranty from the side of the manufacturer. This applies from the date of purchase or delivery of your E-bike. The proof is your proof of purchase, which should be stored carefully. You should register your bike on our website: www.klever-mobility.com. This product liability for material defects applies to all components of the entire E-bike.

Warranty claims are granted:

- In case the defect was present prior to the purchase of the vehicle.
- In case of a material, manufacturing or information defect.
- In case of function-related wear which was not caused by regular tear and wear (see chapter 7. Wear).

Warranty claims are rendered void:

- In case of damages caused by accidents or force majeure.
- In case of damages caused by misuse or improper use.
- In case claims relate to parts which are subject to functional wear (see chapter 7. Wear), except material or product defects.
- In case of damages caused by faulty and inadequate care and maintenance.
- In case of damages caused by faulty and inadequate repairs.
- In case of damage caused by components which were out of specification and assembled after purchase of the bike.
- In case of consequential damage caused by not immediately resolved, earlier identified defects.

In addition, we offer a **comprehensive warranty** that goes beyond the liability for material defects:

- **Two-year warranty** on all bike components.
- **Three-year warranty** on all components of the electrical system: motor, control unit, display and wiring harness.
- **Two-year warranty** on the battery (also refer to the points below).
- **Five-year warranty** against frame breakage.

This warranty applies only to the first owner of this E-bike on presentation of proof of purchase (sales receipt or bill showing

the purchase date). This warranty covers exclusively material and workmanship errors. In case of justified complaints, the article will be replaced or repaired. Further claims such as: replacement of property damage, downtime, cost of borrowing and renting, travel and transportation costs or loss of profits, are excluded. This warranty does not cover damages caused by misuse, by wear and tear, by accidental damage, vandalism and by improper assembly or repair.

1. Warranty repairs will be made exclusively by Klever Mobility or an authorised Klever dealer.
2. Costs from a previously executed repair of an unauthorised dealer, will not be reimbursed.
3. Parts replacement or repairs during the warranty period will not result in an extension or a new beginning of the warranty.
4. Each battery is subject to a natural aging process. Regarding the battery Klever Mobility guarantees after two years, or alternatively, after 700 charging cycles a remaining capacity of about 60% of the original capacity.
5. The two-year warranty begins on the date of purchase.
6. A warranty claim must be notified immediately.



Please note! In case you register your Klever battery on our website (www.klever-mobility.com), Klever extends the warranty term for the battery pack from 2 to 3 years. Within this term we guarantee that your battery still has 50% of its original capacity after 500 charging cycles.

13. Disposal & transportation

Disposal

All electronic components, such as motor, display, battery and charger are to be returned to an environmentally friendly recycling. These parts should not be considered household waste or abandoned into the environment.



According to the European Directive 2002/96/EC, defective or no longer usable electrical equipment must be collected separately and returned to an environmentally friendly recycling. The same goes for batteries according to the European Directive 2006/66/EC. Please return broken or defective batteries to an authorised Klever retailer.

Transportation

Only the battery is considered to be hazardous and subject to the IATA Dangerous Goods Regulation requirements during transport or shipping by third parties (agents, air transportation or mail). Refer to section 5.5.4. Transport of the battery. The transport of all other parts of your E-bike is not particularly limited.

14. Technical data Klever X Pinion 25

Colour LCD Display
Illuminated colour LCD-display, with starter & motor immobiliser and acoustic alarm
5 levels of electric motor support: N – ECO – TOUR – MAX - TURBO
Bicycle computer: current speed, range, trip, km-day, time, Kcal, odo, cadence
TURBO button for: walk-assist/ acceleration at standstill without pedalling / while pedalling
Battery state of charge SOC with 5 bars (each bar representing 20% battery capacity)
Ambient light sensor
Actuation of buttons confirmed with acoustic beep

Rechargeable 850 Wh battery
Lithium-Ion
44.4 V/ 19.1 Ah/ 850 Watthour/ 5.5 kg.
State of charge indicated by LED: < 35% red / 35 – 75% yellow / > 75% green
Allowable discharge temperature: -20°C – +50°C
Allowable storage temperature (12 months): -20°C – +25°C; (optimal +5°C – +20°C)
Allowable charging temperature: -5°C – +45°C (optimal +5°C – +20°C)
Lockable and detachable
Charging time: 850 Wh with 6A charger 3.5 hours
Place of charging: on or off X Pinion 25
Charging cycles: 700 (one complete charging is cycle is 0 – 100% capacity)
Range: 850 Wh 75 – 165 km., under average conditions 100 km.
Lifetime: after 2 years of 700 complete cycles at least 60% of the original capacity still remains.

500 Watt Motor
Brushless DC motor in the rear hub
Control through torque sensor in the frame dropout and speed sensor in the bottom bracket
Output power – torque: 500 Watt – 56 Nm., by software limited to 250 Watt continuous output rated power
Operating voltage: 44.4 V
Electric motor support: until maximum 25 km/h.
Weight: 5.2 kg. – 500 Watt

Standard 6A charger
Input voltage: 200 – 240 V; 47 – 63 Hz
Output voltage: 48 V
Maximum charge current: 6A
Output power: 288 Watt
Size: 225 x 100 x 40 mm.
Weight: 1.3 kg.

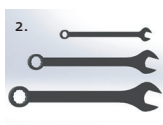
Recommended tightening torque for bicycle components X Pinion 25

Head set	Clamp bolt steerer tube	1 x M5	Allen key 4 mm.	5,5 Nm.
	Locking clamp bolt	1 x M4	Allen key 2 mm.	3.0 Nm.
Stem	Clamp bolt handlebar	2 x M5	Allen key 4 mm.	5,5 Nm.
	Clamp bolt steerer tube	2 x M6	Allen key 6 mm.	9,5 Nm.
Brake lever	Clamp bolt adjusting stem angle	1 x M8	Allen key 6 mm.	16 Nm.
	Clamp bolt handlebar	1 x M5	Torx 20	5,5 Nm.
	Reach brake lever	1 x M6	Allen key 3 mm.	-
Grip	Clamp bolt handlebar	1 x M4	Allen key 3 mm.	3.0 Nm.
Display	Clamp bolt handlebar	1 x M5	Allen key 3 mm.	3.0 Nm.
Bicycle bell	Clamp bolt handlebar	1 x M4	Allen key 3 mm.	3.0 Nm.
Shifter	Clamp bolt handlebar	1 x M3	Allen key 2.5 mm.	1.0 Nm.
Headlight	Mounting bolt	1 x M5	Allen key 4 mm. + 8 mm. open wrench	5.5 Nm.
Seat post	Mounting bolt saddle	2 x M6	Allen key 5mm.	9,5Nm.
Seat post clamp	Clamp bolt seat post	1 x M6	Allen key 6 mm.	9,5Nm.
Front wheel	Thru-axle	1 x M15	Allen key 6 mm.	13 Nm.
Brake calliper	Mounting bolt	2 x M6	Allen key 5 mm.	9,5 Nm.
Disc rotor	Mounting bolt	6 x M5	Torx 25	5,5 Nm.
Fender stay	Clamp bolt fork leg	2 x M4	Allen key 2.5 mm.	3.0 Nm.
	Mounting bolt	1 x M5	Phillips screwdriver + 8 mm. open wrench	5.5 Nm.
Front fender	Mounting bolt booster front fork	2 x M5	Torx 25 + 8 mm. open wrench	5.5 Nm.
Rear fender	Mounting bolt chain stay	1 x M5	Allen key 4 mm.	5.5 Nm.
Rear fender	Mounting bolt luggage rack	1 x M5	Allen key 4 mm.	5.5 Nm.
Ring lock	Mounting bolt	4 x M5	Allen key 3 mm.	5.5 Nm.
Luggage rack	Mounting bolt	4 x M5	Allen key 4 mm.	5.5 Nm.
Rear wheel	Hex nut	12 mm. axle	19 mm. box key & open wrench	40 Nm.
	Non-turn washer LH-side	1 x M5	Allen key 3 mm.	5.5 Nm.
Kickstand	Mounting bolt	2 x M6	Allen key 4 mm.	9,5 Nm.
RH pedal	RH threading	9/16" x 20 TPI	15 mm. open wrench	40 Nm.
LH pedal	LH threading	9/16" x 20 TPI	15 mm. open wrench	40 Nm.
Crank set	Mounting bolt	1 x M15	Allen key 8 mm.	40 Nm.
	Mounting bolt cover		Allen key 10 mm.	5.5 Nm.
Motor wire	Mounting bolt	1 x M5	Torx 25	5,5 Nm.

Recommended tightening torque for standardised metrical hexagon headed bolts (quality grade 8.8)

Bout	M3	M4	M5	M6	M8	M10
Aanhaalmoment in Nm.	1,3	3,0	6,0	10,0	25	50

These torque indications always refer to the upper limit of the bolt's resilience. Use a proper torque wrench when tightening or adjusting a bolt. This will prevent the overcharging and failure of the bolt. Always adjust the torque key to a little more than 75% of the value stated by the manufacturer and tighten the bolt. Check the firm fit. In case the clamping connection is not strong enough, increase the value gradually in little steps. If necessary, adjust the maximum value (never exceed it) and loosen the bolt by half a revolution before finally tightening it.



Tools (image 14.1)

1. Allen keys
2. Combination wrenches
3. Sockets and bits
4. Torque wrench
5. Torx key
6. Tyre lever

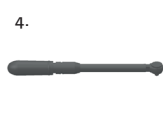
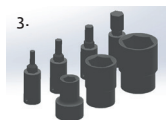


Image 14.1

The gross maximum vehicle weight of the X Pinion 25 should not be more than 150 kg. = cyclist + vehicle + luggage

The payload of the X Pinion 25 = 120 kg.

Tyres

Size: 56 – 584 mm. (27.5" x 2.20")

Recommended tyre pressure: (3.5 – 5.5 bar; 50 – 80 Psi).

Wheel circumference approximately 2,185 mm., the exact circumference depends on the tyre pressure and the gross weight of cyclist + vehicle.

15. Klever E-bike Passport

Fill out all data immediately after purchase of your E-bike in order to present the pass in the case of warranty claims, together with proof of purchase. In case your vehicle ever gets stolen, these data will facilitate the work of the police as well.

Name

Street

Postal code / residence

Phone

E-mail

Klever model

Frame size

Frame colour

Frame serial number

Key serial number

Battery serial number

Charger serial number

Date of purchase

Signature

16. Klever inspection plan

1. Inspection & maintenance

Date:

After 500 – 1,000 km or no later than 1 year after purchase.

Date

Stamp / signature

Repairs

Components replaced

2. Inspection & maintenance

Date:

After 3,000 – 4,000 km or no later than 2 years after purchase.

Date

Stamp / signature

Repairs

Components replaced

3. Inspection & maintenance

Date:

After 5,000 – 7,000 km or no later than 3 years after purchase.

Date

Stamp / signature

Repairs

Components replaced

4. Inspection & maintenance

Date:

After 7,000 – 9,000 km or no later than 4 years after purchase.

Date

Stamp / signature

Repairs

Components replaced

17. Imprint

Editor, photography, text, graphic design and text:

Klever Mobility NL bv

Regulierenring 15

3981 LA Bunnik

The Netherlands

Tel.: +31 (0)30 210 2905

Mail: infoNL@klever-mobility.com

Web: www.klever-mobility.com

Technical modifications regarding the information and illustrations in this manual are reserved. A liability of publishers and other third parties for contributions from this manual and the fact devoted damages of any kind are excluded.

© Copyright

All rights reserved. Reprinting, translation and copying of any kind or any other use, such as on electronic media, even in part without written permission of the Klever Mobility NL bv is not allowed.

Klever Mobility NL bv

Regulierenring 15

3981 LA Bunnik

Nederland

tel. +31302102905

InfoNL@klever-mobility.com

www.klever-mobility.com

Technical hotline +31 (0) 302102905

(Monday – Friday from 8h00 – 17h00 CET)

Klever Mobility NL bv

Regulierenring 15
3981 LA Bunnik
The Netherlands
Tel. +31 (0)30 210 2905
infoNL@klever-mobility.com
www.klever-mobility.com